

& HELIOS RL™  
WIRE-GUIDED ROOFLIGHT SYSTEM



# & HELIOS RL™

## WIRE-GUIDED ROOFLIGHT SYSTEM

Choose Helios RL when you need a simple solution for small skylights or shaped windows.

### OVERVIEW

- Tensioned rooflight blind system
- 5 year warranty
- Sizes up to 3m wide, 3m drop, 4m<sup>2</sup>
- Includes neat fascia profiles
- Includes guidewire support system

### SYSTEM DETAILS

Helios RL combines the Helios roller blind system with powerful constant-tension spring (CTS) units to create a blind that can operate at any angle between vertical and horizontal, and can draw upwards, downwards or sideways.

100mm deep L-shaped fascia sections at each end of the blind provide easy installation and a neat appearance. The 3mm steel side guidewires support and guide the hembar.

Helios RL blinds should be motorised due to the force of the springs. Manual crank handle operation is not recommended but is available if required, subject to size limitations.

### USES & APPLICATIONS

Helios RL blinds are designed to shade smaller rooflights and skylights up to 4m<sup>2</sup>. This versatile system can also be used to make bottom-up roller blinds, including shaped blinds to suit gable-end or sloping-head windows.

Helios RL blinds are simple and fast to install. They can be used with a wide range of shading and blackout fabrics. Motorised operation makes operating your Helios RL blinds easy, even when installed in difficult-to-reach locations.

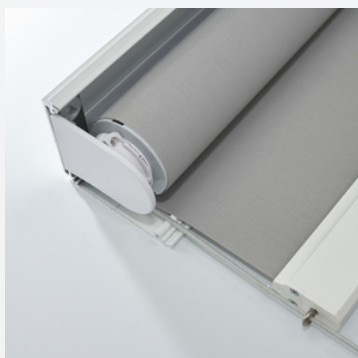


DESIGN & TECHNOLOGY

# &HELIOS RL™

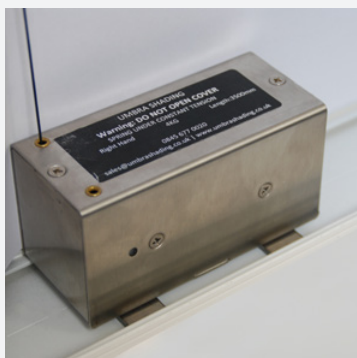
## ROLLER SHADE FEATURES

MAX SIZE  
4m<sup>2</sup>



### FASCIA SECTION AND FIXING PROFILE

- L-shape aluminium profile
- Conceals blind and spring units
- Provides easy and secure fitting



### CONSTANT TENSION SPRING UNITS

- 4kg pull force per unit
- Tension is constant throughout extensions and retraction
- Fabric under tension at any angle



### SIDE GUIDEWIRES

- 3mm plastic-coated steel wire
- Supports and guides hem bar
- Wire tension is adjustable

### CONTROL OPTIONS

- Motorised (recommended)
- Crank-handle with reduction gear (limited sizes)



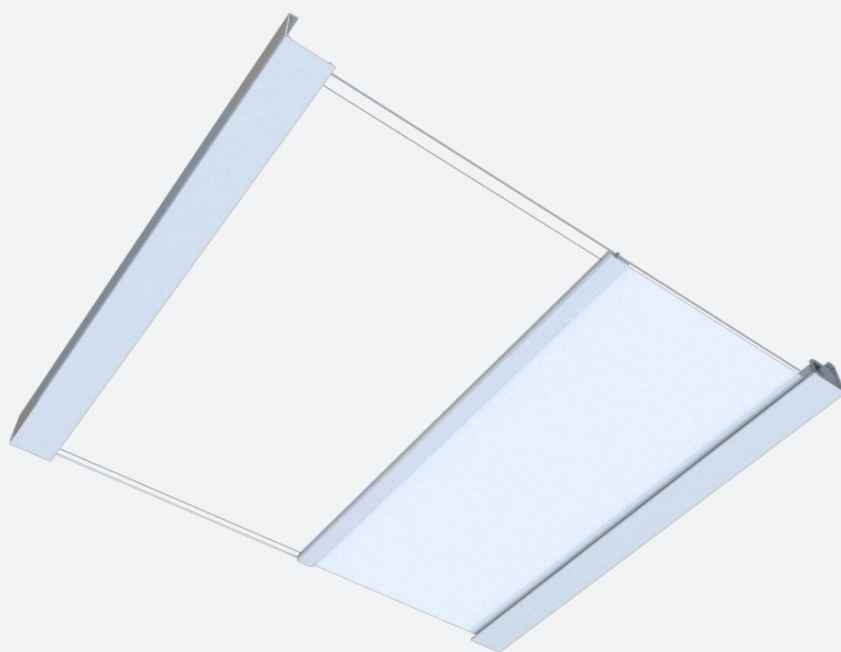
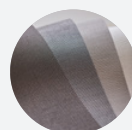
### MOTORISATION CONTROLS

- Hardwired Switch
- Radio remote control
- Digital and IP communication
- Integration and control systems

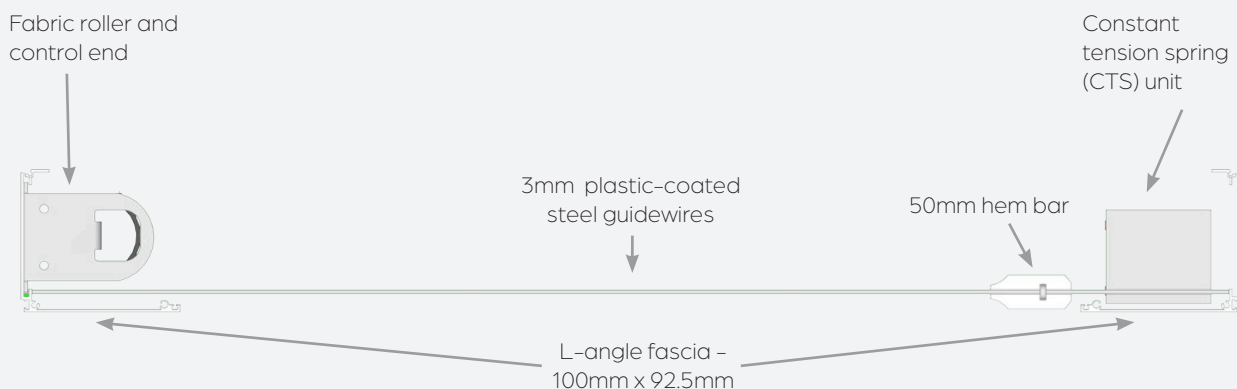


### FABRIC OPTIONS

- Dimout fabrics for light filtering and privacy
- Sunscreen fabrics for glare control with views out
- Blackout fabrics for room darkening



## SYSTEM OVERVIEW



# UMBRA®YOU

## SELECT YOUR SYSTEM

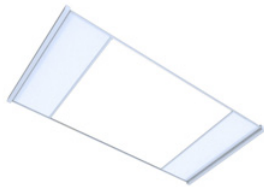
See Systems Overview brochure for more information

ROOFLIGHT SYSTEMS

BLACKOUT SYSTEMS →

SQUARE AREA

18m<sup>2</sup>



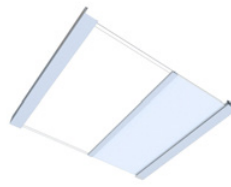
&KUROLOK™  
TWIN RL

9m<sup>2</sup>



&KUROLOK™  
RL

4m<sup>2</sup>



&HELIOS™  
RL

24m<sup>2</sup>



&KUROLOK™

BLACKOUT SYSTEMS

ROLLER SHADES →

14m<sup>2</sup>



&KURO™

LARGE

16m<sup>2</sup>



&HELIOS™

MEDIUM

6m<sup>2</sup>



&SIRIOS™

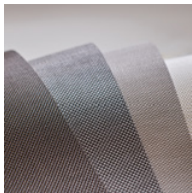
SMALL

3m<sup>2</sup>



&ORBIS™

## SELECT YOUR FABRIC



VIEW OUR RANGE  
OF FABRICS ONLINE

[www.umbrashading.co.uk/products-services/blind-fabrics](http://www.umbrashading.co.uk/products-services/blind-fabrics)

## FIND OUT MORE

FOR MORE SYSTEM INFO AND AUTOMATION  
OPTIONS VISIT

[www.umbrashading.co.uk/tools/product-selector-guide](http://www.umbrashading.co.uk/tools/product-selector-guide)

# UMBRA®

In line with our policy of continuous product development, we reserve the right to alter specifications without notice.

01792 562015

[sales@umbrashading.co.uk](mailto:sales@umbrashading.co.uk)  
[www.umbrashading.co.uk](http://www.umbrashading.co.uk)